



> Description

The VER series is a range of cost effective, medium power, single output converters. Featuring a very small footprint, the standard version complies fully with the latest rail specifications and norms for protection and EMC. For applications requiring compliance with class S2 supply interruptions (10ms hold-up time), an enhanced version is available which also adds active inrush current limiting and output health indication.

Special features include:

- Very compact and cost effective
- High efficiency
- Each model covers two nominal vehicle battery voltages
- Standard and Enhanced versions available
- Fully compliant with rail standards, including EN50155 & EN50121.3.2

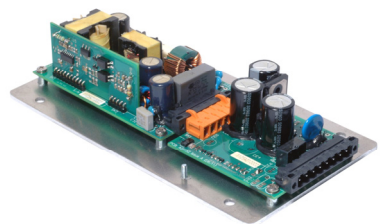
> Input Specifications

The following input voltages versions are available as standard:

72 / 110V (50.4 - 137.5V) dc (Suffix AD)
 24 / 36V (16.8 - 50.4V) dc (Suffix BF)



VER standard version



VER enhanced version

| Option | |
|--------|--|
| Code | Detail |
| E | Enhanced version. Adds 10ms hold-up time, active inrush limiting and output good signal. |

| Parameter | Detail | | |
|--|---|-----------|-----------|
| Under-voltage switch-off (approximate value) | Customer configurable by removal of header | Suffix AD | Suffix BF |
| | Standard (factory set) configuration | 41V | 13V |
| | Alternate configuration | 63V | 20V |
| Input Ripple | To EN50155 | | |
| Input Protection | Reverse polarity protection by shunt diode (external fuse or circuit breaker required). Surges and transients to EN50155 (direct and indirect) | | |
| Inrush Current | Standard version: limited by source impedance but duration <0.1ms Enhanced version: limited to typically 5 x nominal current (after 0.1ms) | | |
| Efficiency | 90% typical | | |
| Hold up time | Standard version: EN50155 Class S1 (no interruptions) Enhanced version: EN50155 Class S2 (10ms interruptions) | | |
| Input Fuse | Not fitted. External fuse or circuit breaker required. | | |

> Output Specifications

| Part number | Output | |
|-------------|----------------------|--------------------|
| | V _o [Vdc] | I _o [A] |
| VER 1200 | 12 | 8.3 |
| VER 1500 | 15 | 6.7 |
| VER 2400 | 24 | 4.2 |
| VER 3600 | 36 | 2.8 |
| VER 4800 | 48 | 2.1 |

| Parameter | Detail |
|-------------------------|--|
| Maximum Output Power | 100W |
| Output Versions | Single output only |
| Output Voltage | Can be specified from 12V to 48V |
| Setting Tolerance | ±1.0% at 50% load, 15°C to 25°C |
| Minimum Load | Zero |
| Line & Load Regulation | ±1.0% combined |
| Temperature Coefficient | <0.02% / °C |
| Output Ripple | <1% Pk-Pk of Output Voltage |
| Output Noise | <75mV Pk-Pk superimposed (up to 20MHz) |
| Response Time | 0.5ms to within 1% (for a 10% - 100% load change) |
| Current limit | Operates at 105 - 130% of rated output current |
| Thermal Protection | Shuts down PSU if safe internal temperature is exceeded. Auto recovery. |
| Remote ON/OFF | Connect inhibit pin to negative input to turn off converter. |
| Output Good signal | Indication by volt free relay contacts [closed=output good] (Enhanced version only) |
| Isolation | Input to Output 2.0kV ac (tested at 3.0kV dc) Input to Case 1.0kV ac (tested at 1.5kV dc) Output to Case 1.0kV ac (tested at 1.5kV dc) |





> Environmental Details



VER standard version with cover

| Parameter | Detail |
|--------------------------|--|
| Operating Temperature | EN50155 class TX: -40°C to +70°C (no de-rating). (85°C for 10 minutes.) Base plate is intended for cold wall mounting and must not exceed 85°C for full power operation (90°C during 10 minute over temperature). |
| Output power de-rating | Above 70°C: 3.0% / °C; 100°C absolute maximum |
| Storage Temperature | -55°C to +85°C |
| Cooling | Convection / Conduction. Mounting surface should be thermally rated at 1.5°C/W. A thermal mass equivalent to 450g of aluminium is required for 10 minutes operation at 85°C. |
| Relative Humidity | 95% max. |
| Shock & Vibration | EN50155 (EN61373) for mounting in any orientation |
| Environmental Protection | IP20 with optional ventilated steel cover |

> Applicable Norms



VER enhanced version with cover

| Parameter | Detail |
|-----------|------------------------------------|
| EMC | EN50155 (2007), EN50121-3-2 (2006) |
| Other | EN50155 (2007) |

> Mechanical Characteristics

| Parameter | Detail | |
|--|--|--|
| Construction | Conformal coated PCB with aluminium base plate. Optional ventilated steel cover. | |
| Dimensions (L x W x H) <i>Note: width is 100mm with flanges</i> | <u>Standard Version</u> 110x70x40mm (42mm with cover) | <u>Enhanced Version</u> 180x70x40mm (42mm with cover) |
| Weight | 250g (330g with cover) | 350g (500g with cover) |
| Connections | 6 way PCB mounted connector with screw locks, part number: Weidmüller SL-SMT 5.08/6/90LF | 8 way PCB mounted connector with screw locks, part number: Weidmüller SL-SMT 5.08/8/90LF |
| Fixings | Four ø 5.5mm fixing holes & two 5.5mm slots on base plate. | Four ø 5.5mm fixing holes. |

| Option | |
|--------|------------------------|
| Code | Detail |
| S | Ventilated steel cover |

> Outline Drawing (standard and enhanced versions with option 'S' cover fitted)

